

Manual for installation

power lifting windshield with wiper on aluminum roof

CFMOTO ZFORCE1000 sport
CFMOTO ZFORCE1000R sport

MP0574 - Power lifting windshield with wiper
MP0538 - Aluminum roof



MP0574 - consist of 2 boxes



Install the aluminum roof (MP 0538). Open the package.



Lay out the roof panels on a flat surface



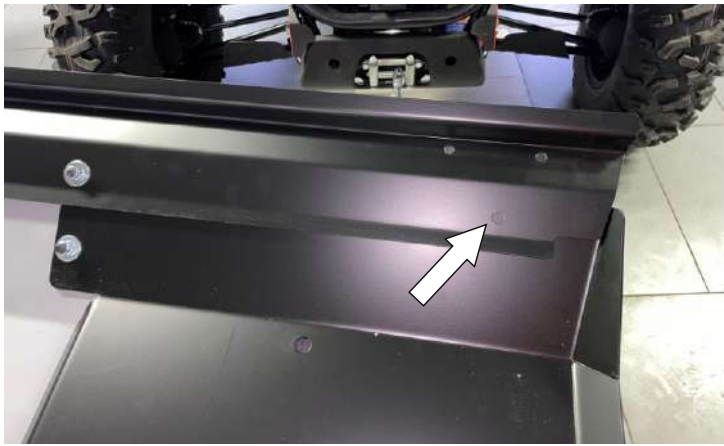
Install all fasteners as required on the picture.



Take out of the box №2 MP 0574 connecting bar



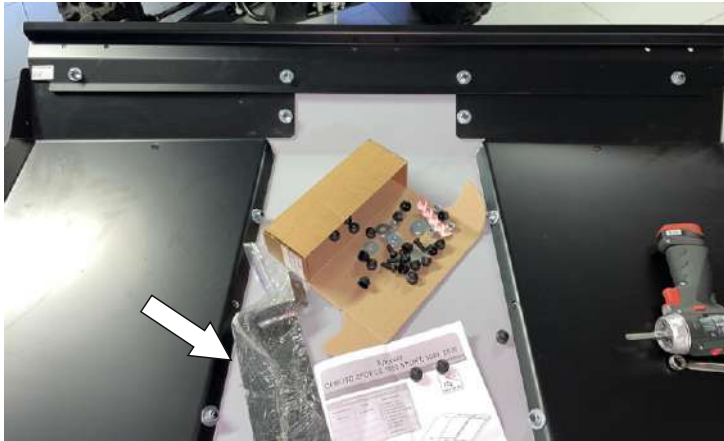
Install the connecting bar with the roof panels



Make sure there are holes in the side panels of the roof



If there are no holes, tighten all fasteners and drill 2 holes with a diameter of 10mm



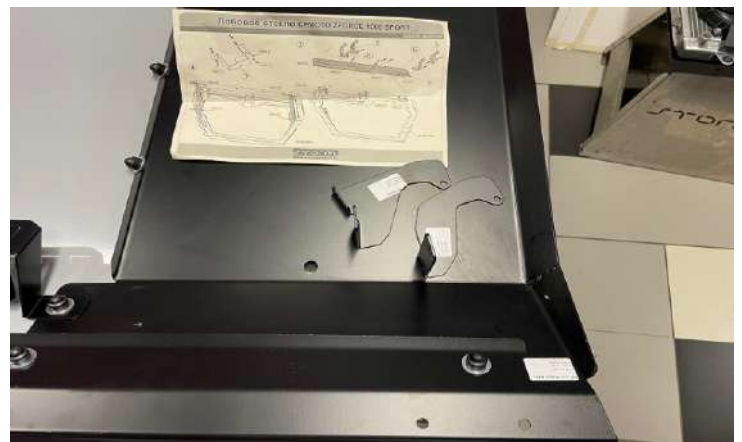
Install the button panel in the middle (grey) roof panel.



Install protective plastic caps



Open the box №1 (MP 0574). Take the brackets of linear actuators and the hinges (3 pcs).



Carefully read the application diagram of brackets and hinges, they are different for the left and right sides.



Install the fasteners in the hinge as shown in the picture.



Install the outer part of the bracket. Set the fasteners.



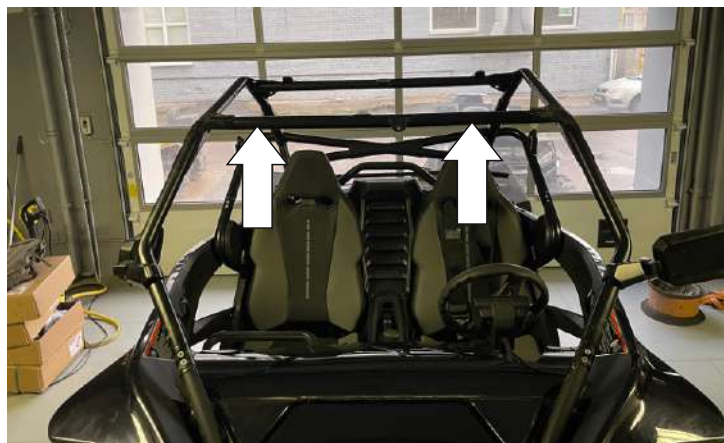
Install the inside of the bracket. Tighten the fasteners.



Remove the standard plastic glass.



Remove the standard plastic roof.



Install the roof mounting clamps.



Install the aluminum roof on the frame.



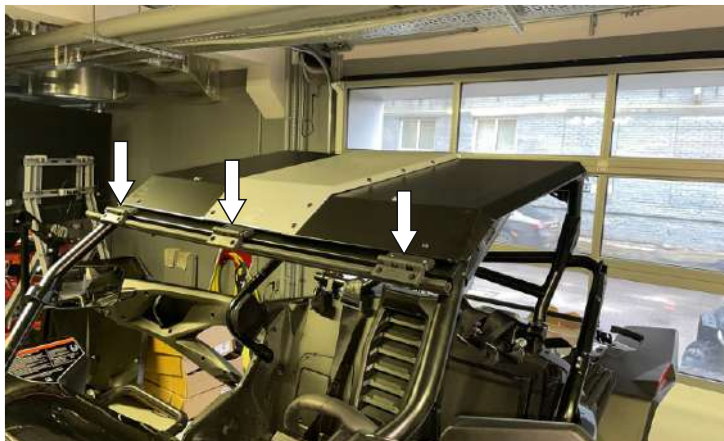
Set the roof fasteners and clamps.



Set roof fasteners to the back of the frame.



Adjust the position of the button panel and the roof.



Tighten the roof fasteners. The baskets must be set.



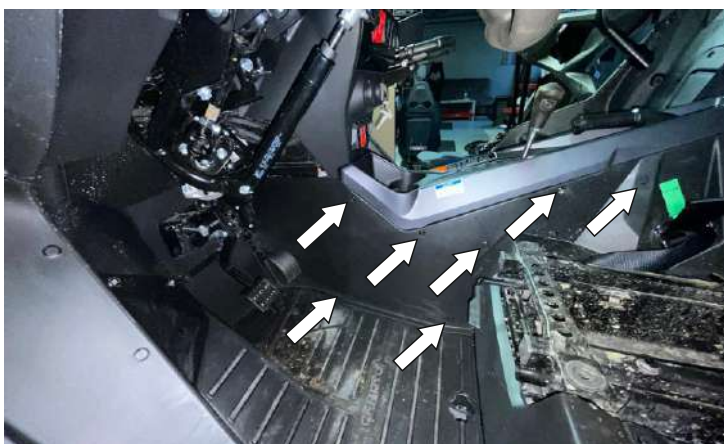
Remove the driver's seat.



Remove the frame of the driver's seat.



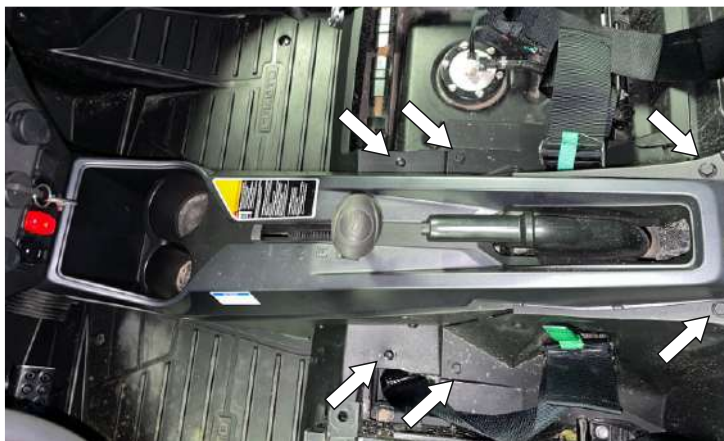
Remove the fasteners of the side panel (driver side).



Remove the fasteners of the side panel (driver side).



Remove the fasteners of the side panel (passenger side).



Remove the fasteners of the side panels at the central part.



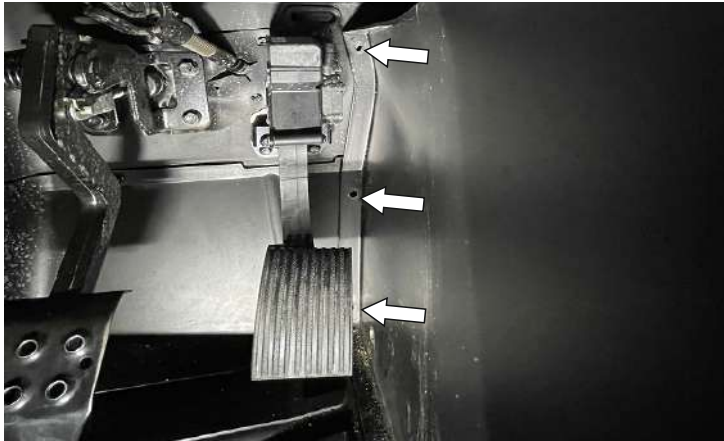
Slightly lift the central panel.



Unscrew the bolt from right part of central panel.



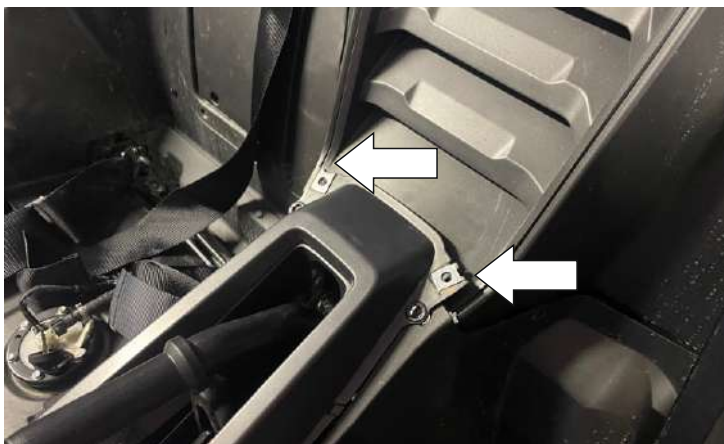
Unscrew the bolt from left part of central panel.



Remove the fasteners of the driver's panel near with pedals.



Loosen the lock nut. Unscrew the gearshift knob.



Remove the edge of the center panel.



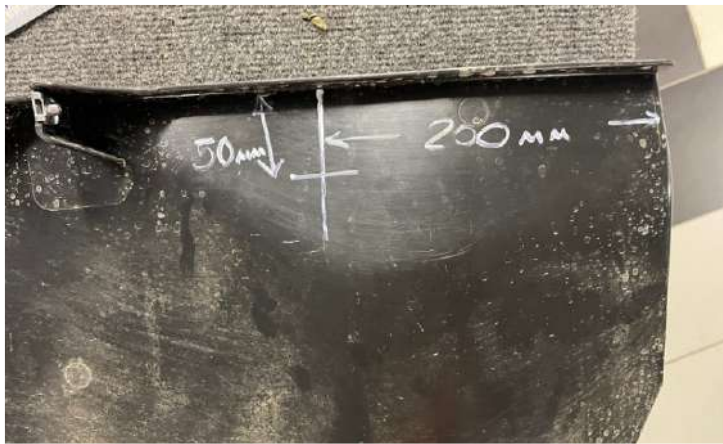
Unscrew the driver panel mounting bolt.



Remove the driver's panel.



Driver's panel (front side).



Mark the place of the hole as shown in the photo.



Drill a 44 mm hole.



Install the washer tank by attaching it against the driver's panel as shown in the photo.



Mark the mounting points of the bracket on the plastic.
Drill 7-8mm holes in the plastic.



Fasten the tank.



View of the tank from the driver's side.



Place the frame with glass on a flat surface.



Install the wiper motor seal.



The position of the wiper motor attachment to the frame.



Fasten the wiper motor.



Install the left bracket of the linear actuator



Install the right bracket of the linear actuator.



Attach the windshield to the frame.



Align the brackets with the windshield.



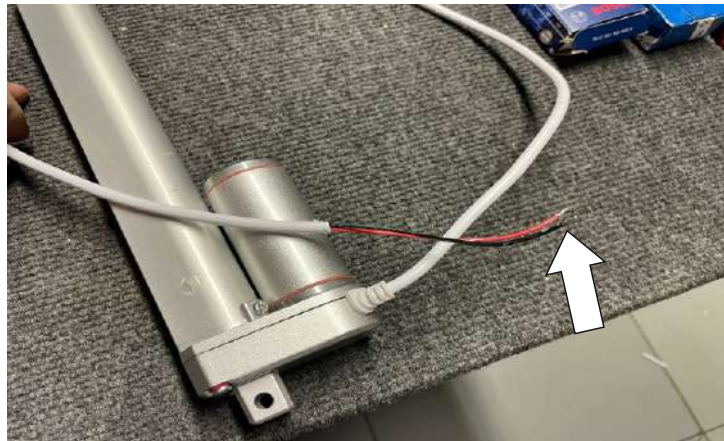
Set the side brackets first, then the central one.



Gradually tighten the fasteners of the brackets, lifting and lowering the frame (the brackets align with each other).



Install the sealing gasket on the frame as shown.
Cut off the excess.



Clean the ends of linear actuators from insulation.



Apply voltage to the contacts of the linear actuator.
Fully compress. The actuator will turn off automatically.



Apply voltage to the opposite contacts of the linear actuator.
Fully unclench, will turn off automatically.



Install a linear actuator.



Fasten the linear actuator.



Linear actuator on the driver's side.



Use a puller to detach the central panel with buttons (below).



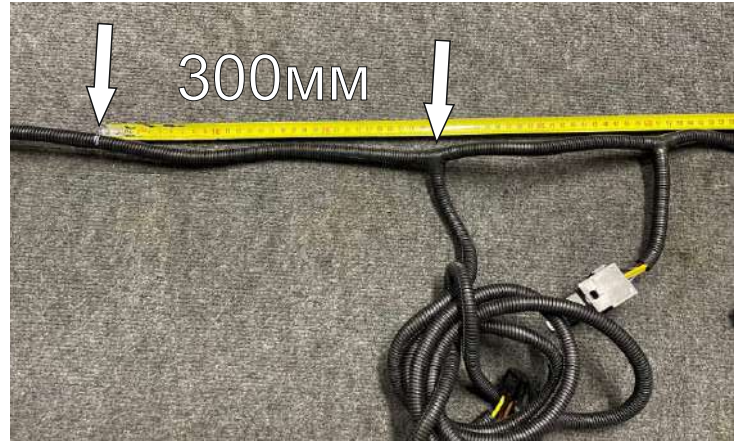
Remove the button panel horizontally, with a little effort towards the back.



Remove the button panel aflat, with a little effort towards the back part.



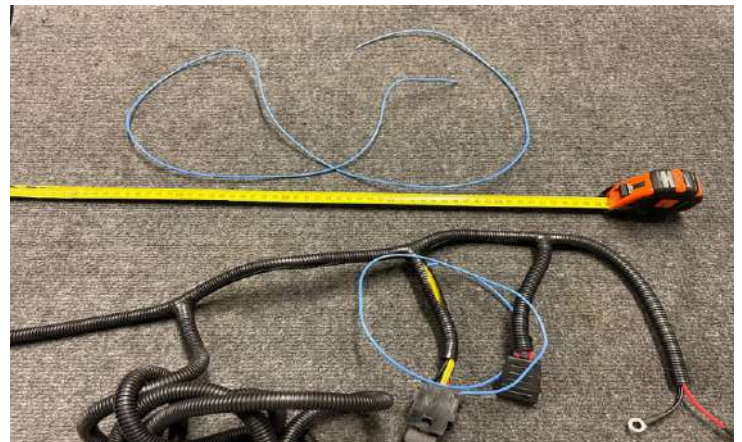
Unscrew the panel bolts (pointed in the photo). Slightly lift the panel. Put spacers from the frame (windshield).



Put a mark on the insulation at a distance of 300 mm from the junction point



Pull out the wires in the marked place. Snack on the blue wire.



Pull the blue wire out of the insulation to the relay socket.



Stretch the blue wire (remainder) as shown in the photo. Use it as a conductor.



Connect the blue wire and the electric wiring of the wiper (motor connection connector).



The result of stretched electrical wiring.



Connect the end of the electrical wiring to the motor as shown in the photo.



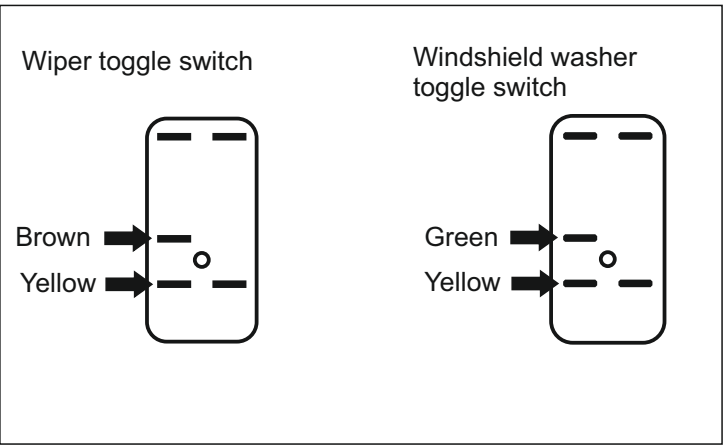
Pull the end of the electrical wiring through the dashboard - down to the washer tank.



Remove the caps of 2 buttons in the panel under the roof.



Connect the wires with bottoms.



Connection scheme



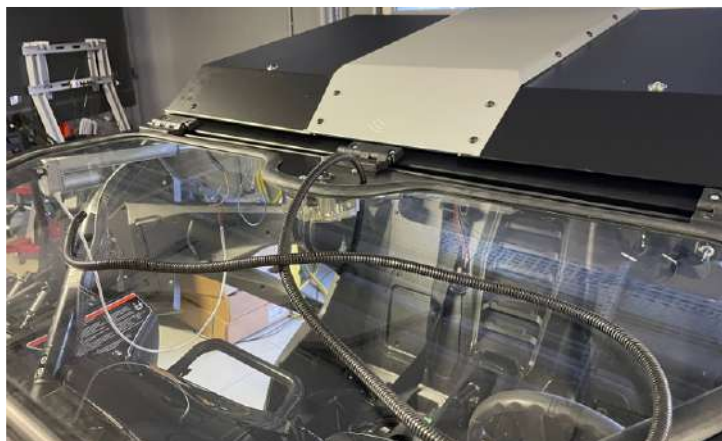
Remove the cap of one button in the panel under the roof.



Pull the end of the electrical wiring through the panel.



Thread the washer pipe into the corrugated tube.



Thread the corrugated tube through the seal in the windshield frame.



Install the washer tube and the connector to the water pump.



Install the water pump in the tank. Install the plastic panel of the driver's side.



Connect the negative terminal (black) to the pedal bracket as shown in the picture.



Stretch the conductor wire (a piece of blue wire) for the washer tube. The same with the right side.



Stretch the electrical wiring of the windshield from the button panel under the roof to the engine compartment.



Place the wires in the engine compartment. Pull off excess wires with a plastic clamp.



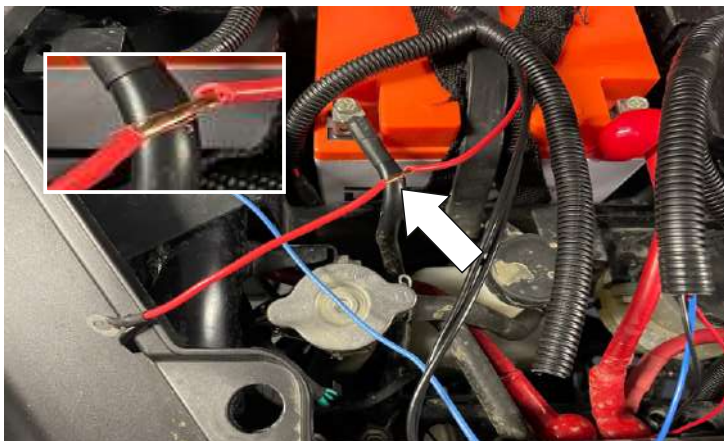
Fix the electrical wiring of the windshield to the frame in the left front arch.



Connect the wiring of the actuator and the electrical wiring of the windshield. Isolate the connection.



Connect the toggle switch to the electrical wiring. Install the toggle switch on the button panel under the roof.



Remove the insulation from the red wire. 100mm from the terminal.

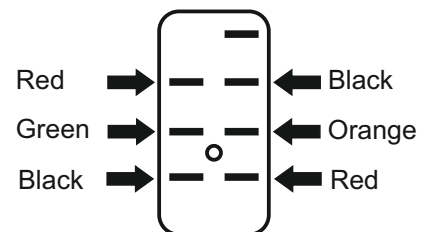


Cut off part of the wiring of the linear actuator, as shown in the picture.



Put the wires in the corrugated tube. Attach to the linear actuator.

Toggle switch (up/down) of the windshield



Connection scheme



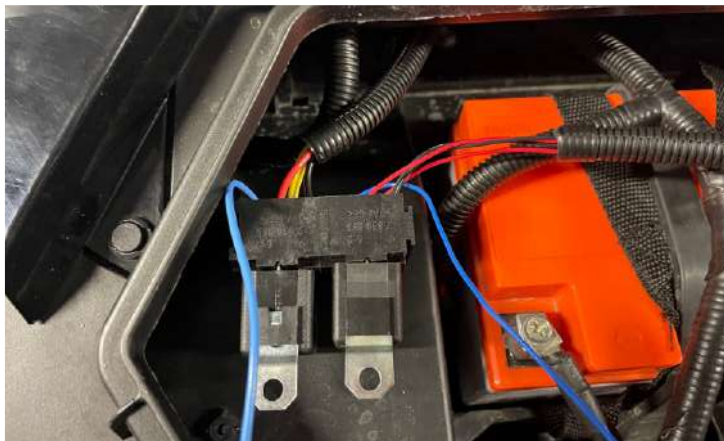
Connect the windshield wiring to the wiper wiring. Isolate the connection place.



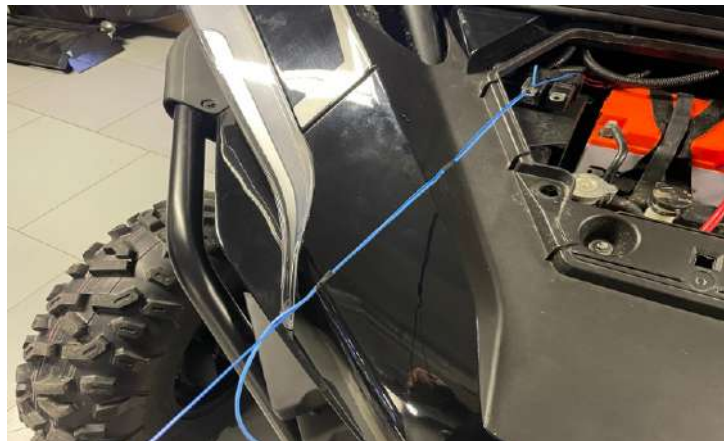
Make an incision in the corrugations of both electrical wires to output the blue wires (ignition connection).



Fix the relay socket on the plastic panel.



Output the wires of both electrical wiring as in the photo.



Stick the wires.



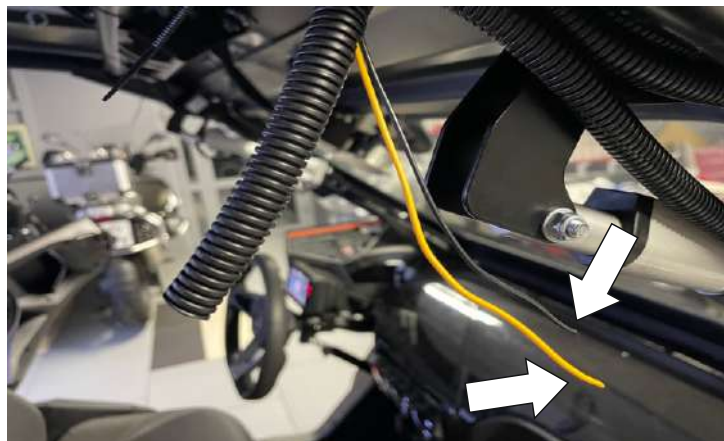
Remove the wires through the button panel in the dashboard.



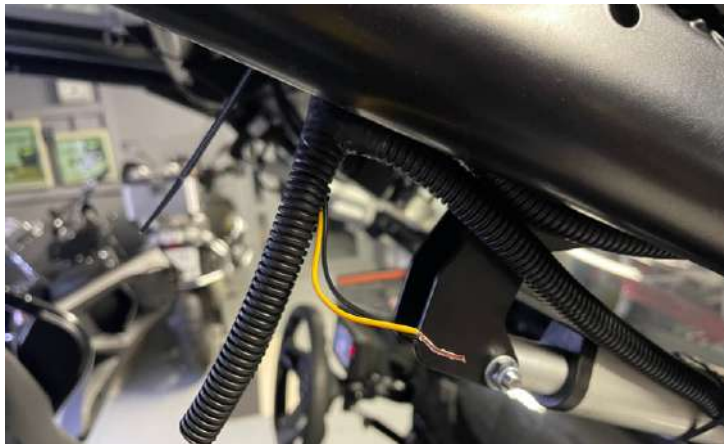
Take the standard cigarette lighter connector through the button panel in the dashboard.



Clean the insulation from the green-white wire and attach the two blue wires. Isolate the connection.



Remove the insulation from the wires (yellow and black).



Connect the wires together. Isolate the connection.



Make sure there is no tension in the corrugated tubes.
Loosen, if necessary.



Connect the electrical wiring to the battery. Install the fuse.



Turn on the ignition. Check the lifting system of the glass.
Check the windshield washer, then the wiper.